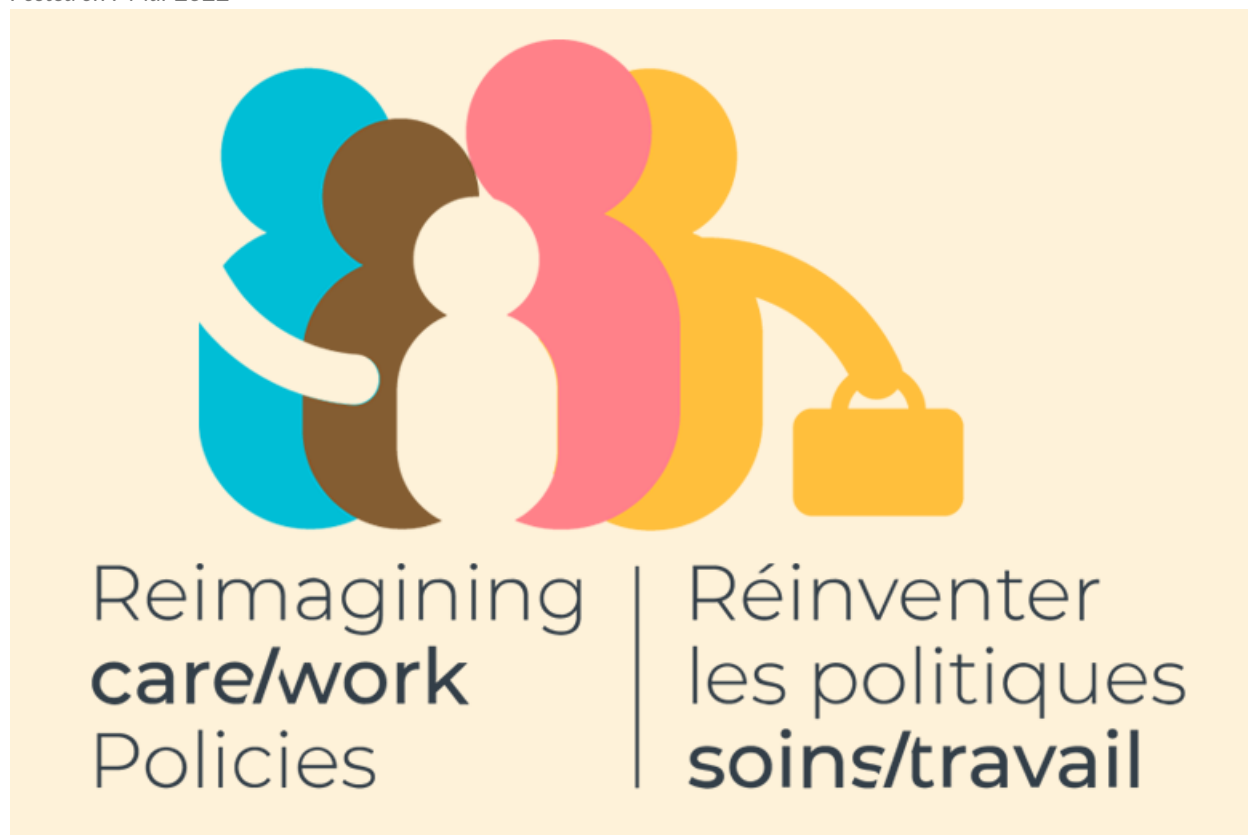


Re-imagining care/ work policies ^[1]

Posted on 7 Mar 2022



<https://rcwproject.ca/> ^[2]

Reimagining Care/Work Policies (RC/W) is a group of projects that focus on cutting-edge thinking in research projects and policy development.

Check this box if you want this landing page block to **ONLY** show up on the /resources page, and **NOT** on the front page.:

Source URL (modified on 7 Mar 2022): <https://childcarecanada.org/node/15846>

Links

[1] <https://childcarecanada.org/node/15846> [2] <https://rcwproject.ca/>