

TRENDS & ANALYSIS 2008

Quick facts

30 quick facts about Canadian ECEC

DEMOGRAPHICS

1 Number of children in 2007

4.7 million 0-12 year olds (1.0 million 0-2s, 1.0 million 3-5s, 2.6 million 6-12s)
In 1995: 5.1 million 0-12s
In 2005: 4,7 million 0-12s

2 Mother's labour force participation rate in 2007

69% with youngest child 0-2 years,
77% with youngest child 3-5 years,
84% with youngest child 6-15 years
In 1995: 61% 0-2s, 68% 3-5s; 76% 6-15s

Workforce participation rate (%) of mothers by age of youngest child – 1995-2007

| Age of youngest child | 1995 | 1998 | 2001 | 2003 | 2005 | 2007 |
|-----------------------|------|------|------|------|------|------|
| 0-2 years | 61 | 65 | 66 | 69 | 69 | 69 |
| 3-5 years | 68 | 71 | 73 | 75 | 76 | 77 |
| 6-15 years | 76 | 78 | 81 | 82 | 83 | 84 |

3 Mothers in the labour force in 2007

617,700 with youngest child 0-2 years,
458,000 with youngest child 3-5 years,
1.5 million with youngest child 6-15 years

4 Children with mothers in the paid labour force in 2007

3.1 million 0-12 year olds
623,000 0-2s; 651,000 3-5s; 1.8 million 6-12s

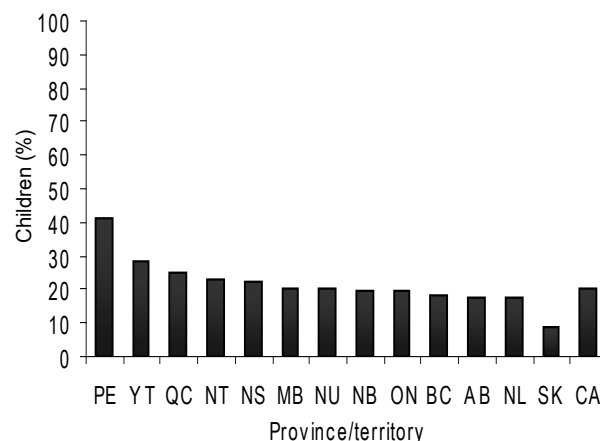
5 Birth rates per 1,000 population in 2007: 11.1 Canadian average

Provinces/territories range - from 8.7 to 25.2

ACCESS

6 Number of regulated child care spaces in 2008: 867,194

Percent of children 0-5 years for whom there was a regulated child care space - 2008¹



¹ Includes centres and part-day (nursery schools); age breakdown not available for regulated family child care.

7 Per cent of 0-12 year olds for whom there was a regulated child care space in 2008: 18.6%

Range for 0-12 year olds by province/territory — from 6.3% to 36.1%

8 Per cent of 0-5 year olds for whom there was a regulated child care space in 2008: 20.3%

Range for 0-5 year olds by province/territory — from 9.1% in to 41%

9 Proportion of total child care spaces in regulated family child care in 2008: 16%

10 Proportion of child care spaces that were school-aged in 2008: 36%²

11 Growth in regulated child care

2007-2008: 29,791 additional spaces
2006-2007: 26,131 additional spaces
2004-2006: 32,668 average each year
2001-2004: 50,831 average each year

Total regulated child care spaces 2008 and growth 2006-2007, 2007-2008

| | Total spaces 2008 | Growth 2006-2007 | Growth 2007-2008 |
|----|----------------------|---------------------|---------------------|
| NL | 5,972 | 226 | 104 |
| PE | 4,424 | 243 | 130 |
| NS | 13,711 | 265 | 464 |
| NB | 15,506 | 1,007 | 1,336 |
| QC | 368,909 | 3,039 | 4,337 |
| ON | 256,748 | 12,613 | 14,260 |
| MB | 27,189 | 391 | 814 |
| SK | 9,173 | 138 | 323 |
| AB | 73,891 | 4,889 | 2,804 |
| BC | 87,538 | 3,196 | 5,152 |
| NT | 1,768 | 178 | 65 |
| NU | 1,013 | -17 | 43 |

² Note that the definition of “school-aged” varies – in some instances it includes four year olds, in others it begins at age 6. School-aged is generally up to age 12.

12 Number of child care centres on reserves and in Aboriginal self-government regions in 2008: 527 (estimated)

13 Number of provinces/territories in which kindergarten for five year olds is full school-day in 2009: Three³

14 Number of provinces/territories providing kindergarten for a substantial proportion of four year olds in 2009: One

FINANCING

15 Total provincial/territorial budget allocations for regulated child care in 2007/08: \$3,087,442,746

Total provincial/territorial budget allocations for regulated child care 1992-2008 (\$)

| | |
|---------|---------------|
| 1992 | 761,959,000 |
| 1995 | 995,279,000 |
| 1998 | 1,048,579,000 |
| 2001 | 1,889,804,000 |
| 2003/04 | 2,401,879,000 |
| 2005/06 | 2,940,140,000 |
| 2007/08 | 3,087,442,746 |

16 Growth in total provincial/territorial child care budget allocations between 2005/06 and 2007/08: \$147.3 million

Growth between 2003/04 and 2005/06:

\$538.3 million

Growth between 2001/02 and 2003/04:

\$512.1 million

³ Note that three additional provinces have announced that kindergarten for five year olds will become full school-day (ON's initiative may be a blended early learning and child care program, not full school-day kindergarten)

17 Total federal transfer funds designated for regulated child care in 2007/08: **\$600 million**
 In 2006/2007: \$950 million
 In 2005/2006: \$725 million

18 Federal spending for Aboriginal ECEC programs in 2006/07: **\$158.1 million**
 In 2005/06: \$159.5 million

QUALITY

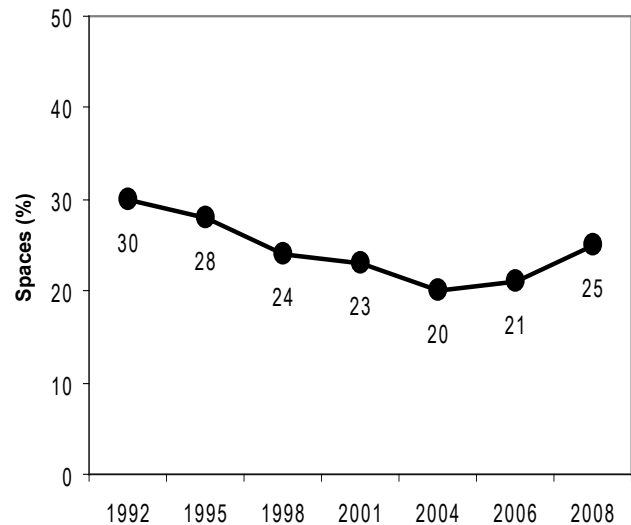
19 Number of provinces/territories that have/are developing an early childhood curriculum framework in 2009: **Five**

20 Public spending on each regulated space (Canada-wide mean) in 2008: **\$3,560**

21 Percent of spaces that were for-profit in 2008: **25%**
 In 2006: 21%

22 Number of provinces/territories in which more than half the growth in centre spaces (0-5s) was for-profit: **Six (of nine)**

Percent of regulated centre-based spaces that were for-profit - 1992-2008



23 Provision of publicly-operated child care
 Twenty-seven municipalities in Ontario, three in Alberta and four in Saskatchewan operate public child care
 All Quebec school-aged child care programs are operated by school authorities

24 Number of provinces/territories that require a four year early childhood-related degree for any centre-based staff: **One⁴**

25 Number of provinces/territories that set early childhood requirements for certified kindergarten teachers: **None**

⁴ Manitoba requires either a relevant four year degree OR an early childhood diploma plus an approved post-diploma certificate for directors.





26 Number of provinces/territories that require some early childhood training for regulated family child care providers: **Nine**

27 Income for child care centre staff in **2006: \$25,100** (Canada-wide median full-time, full-year employment income)

FAMILY POLICY

28 Number of initial maternity leave claims allowed in **2007: 225,749**
Total births: 354,085
64% of births resulted in maternity benefit payment

29 Duration of maternity/parental benefit paid to eligible⁵ new birth parents by the federal government in **2009**
15 weeks maternity, 35 weeks parental benefit (total 50 weeks)

5 Eligible is defined as 600 hours of insured work in the previous 52 weeks

Median full-time, full-year employment income for centre-based Early Childhood Educators and Assistants – 2006

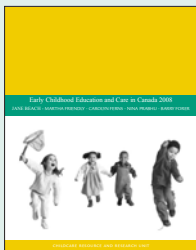
| | All staff | Those with an ECE credential |
|----|-----------|------------------------------|
| NL | \$15,884 | \$18,608 |
| PE | 19,616 | 21,970 |
| NS | 20,060 | 20,945 |
| NB | 17,429 | 17,942 |
| QC | 26,240 | 27,298 |
| ON | 27,199 | 29,298 |
| MB | 21,126 | 27,420 |
| SK | 19,193 | 22,022 |
| AB | 18,774 | 22,009 |
| BC | 24,987 | 26,145 |
| NT | 30,017 | not available |
| NU | 25,008 | 23,168 |
| YT | 29,112 | 45,063 |
| CA | 25,100 | 27,366 |

Source: 2006 census data on National Occupational Classification for Statistics E-217, early Childhood Educators and Assistants.

30 Payment rate for maternity/parental leave benefits in **2009: up to 55% of insured earnings to a maximum of \$447/week⁶**

BONUS! Number of provinces/territories that earmark a leave period for new fathers: **One (Quebec)**

6 Note that while mat/pat leave benefits are set by the federal government, specific leave provisions are set by provinces/territories



Early Childhood Education and Care in Canada 2008

Jane Beach, Martha Friendly, Carolyn Ferns, Nina Prabhu, Barry Forer.
June 2009. 214pp.

Trends & Analysis 2008

Using data from *Early Childhood Education and Care in Canada 2008*, the *Trends & Analysis 2008* documents provide quick facts and examine current issues and directions in ECEC.

At www.childcarecanada.org publications and more resources are available online. Sign up online to receive weekly enews informing you of new research and resources, CRRU publications, and upcoming events.