

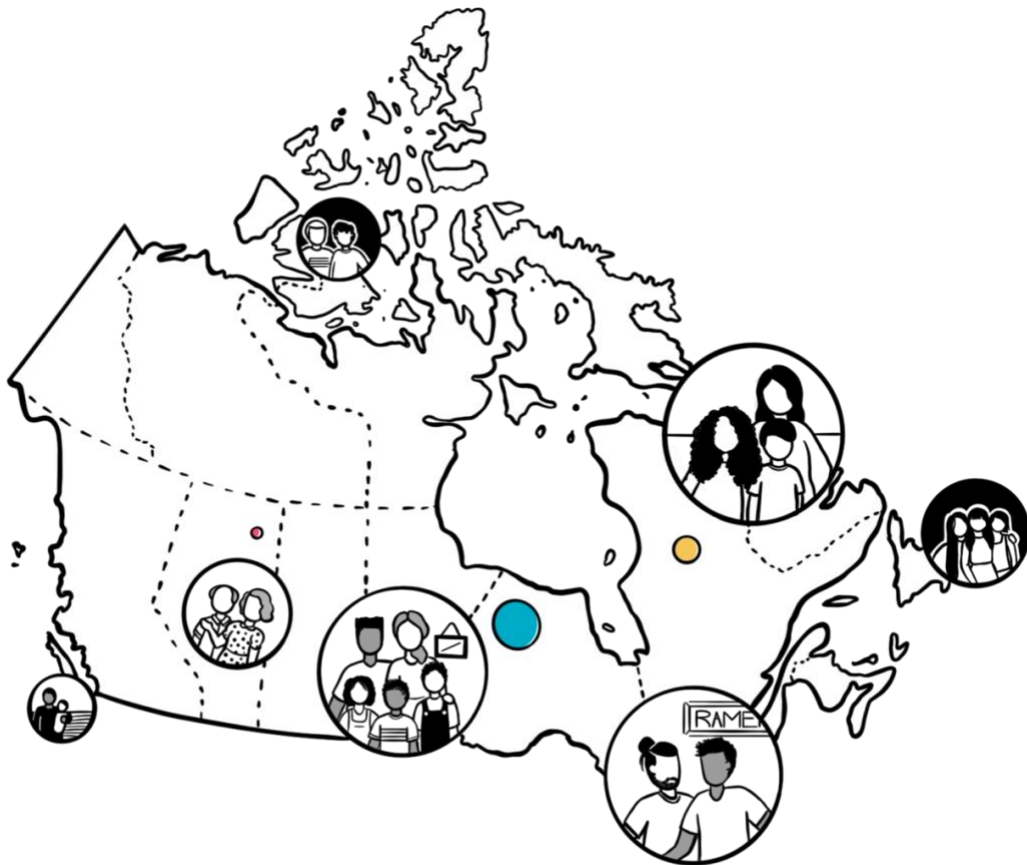


Reimagining
care/work
Policies

Réinventer
les politiques
soins/travail

Reimagining Care/Work Policies (RC/W) Newsletter 3 (June 2023)

As we begin our summer season, we wanted to share with you what has been happening with the RC/W Partnership Project so far this year.



A note from our Project Director, Andrea Doucet:

Hello colleagues and friends,

We've been busy on many fronts – with projects, writing of varied kinds, and events.

At the end of May, some of us met at the Congress of the Social Sciences and Humanities at York University. It was the first time in three years that we have met at this annual national conference as the last three years were online. It was wonderful to share ideas, meals, and some good laughs.

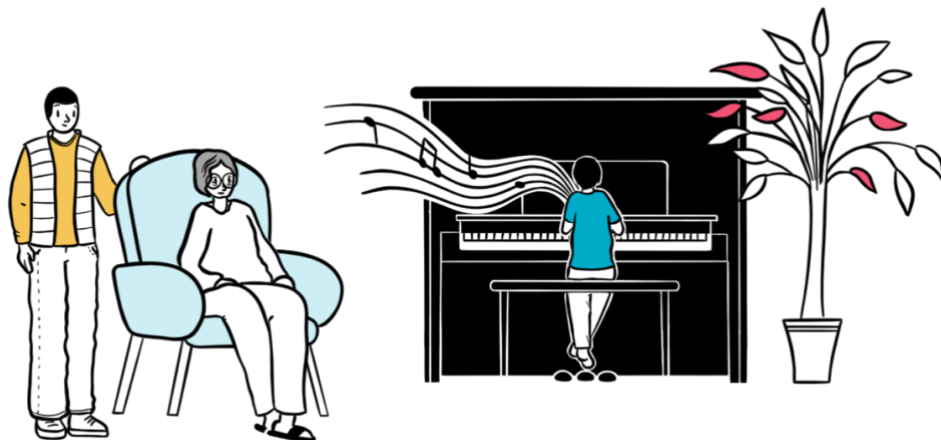
We are embarking on some early fall planning for the next stage of research and events, and we will be reaching out to some of you for ideas and input. We hope you enjoy reading about our activities over the last six months.

If you are a co-investigator, collaborator, or partner and you have projects or activities you would like to collaborate on, please don't hesitate to contact **Jennifer (Jenn) Turner**, our project manager. If you are a researcher (faculty, community, non-profit, student, or postdoctoral fellow) and you want to be involved in our work, you can also contact Jennifer.

You can reach her at: jturner2@brocku.ca

You can reach me at: adoucet@brocku.ca

We have organized this newsletter into the following sections: (1) Events, (2) Current Projects, (3) Publications, and (4) Team news.



1. EVENTS

Congress 2023

We organized two panels at the Congress of the Social Sciences and Humanities/the Canadian Sociological Association, which was held at York University from May 29 – June 2, 2023. Our first panel, [*Reimagining Care/Work Policies for Diverse Canadian Families*](#), organized by **Andrea Doucet** and **Susan Prentice**, included four presentations:

- **Sophie Mathieu** on the uptake of paternity benefits in Quebec since the 2020 lockdown;
- **Lindsey McKay, Marco Sasso, and Kenya Thompson** on knowledge mobilization through open educational resources;
- **Busra Hacioglu, Samantha Burns, Adrienne Davidson, Michal Perlman, and Linda White** on the stability and instability of child care arrangements during the Covid-19 pandemic in Canada; and
- **Sylvia Fuller and Manlin Cai** on parents' pandemic mental health and the differences for mothers, fathers, and high-risk families.



From left to right: Busra, Sophie, Andrea, Martha, Linda, Adrienne, Lindsey, Manlin

Our second panel, [*Care is Not a Tally Sheet: Reflections on the Care/Work Portrait as a Method for Rethinking and Remaking the Field of Gender Division of Domestic Labour*](#), organized by **Andrea Doucet** and **Janna Klostermann**, included presentations by:

- **Kim de Laat** and **Andrea Doucet** on Fathering and Care/Work Policies;
- **Laura Fisher** and **Karen Foster** on Care/Work in Rural and Small Town Families;
- **Margaret (Meg) Gibson**, **bridget livingstone**, **Jenna Cooper**, and **Brianna Urquhart** on 2SLGBTQ Families and Care/Work; and
- **Umay Kader** and **Andrea Doucet** on Care/Work Stories and New Immigrant Families in Canada.



From left to right: Kim, Karen, Umay, Janna (in back), Laura, Andrea, Jenn, Meg, bridget, Jenna, Brianna

Many of our team members also presented papers at Congress. We would like to highlight just a few of the presentations by our Co-investigators, student team members, and research associates:

Manlin Cai (PhD Student, University of British Columbia), Why Searching for Partners Online is Not Efficient: The Case of Canadian-Born and Immigrant Chinese Online Daters, CSA, June 1

Kim de Laat (Co-Investigator, University of Waterloo), Family Diversity and Wellbeing in Canada, in a panel organized by **Sophie Mathieu, Margo Hilbrecht**, and **Margaret Campbell** of The Vanier Institute of the Family, CSA, May 30

Laura Fisher (PhD Student, Dalhousie University), Stuck in the “Welfare Trap”: Single Parents Navigating Active Discouragement and Institutional Neglect or Silence”, CSA, June 1

Karen Foster (Co-Investigator, Dalhousie University) and Hannah Main (Dalhousie University), Rural Communities and Intersecting Crises in Canada, CSA, May 30

Martha Friendly (Co-Investigator and Steering Committee Member, Childcare Resource and Research Unit), Universally Accessible, Publicly Funded, High Quality, Not-For-Profit, Inclusive Child-Care: Are We There Yet? What Else Needs to be Done?, CSA, June 2

Alyssa Gerhardt (PhD Student, Dalhousie University), COVID, Childcare and Mental Health: A Rural Urban Comparison, CSA, June 2

*Non-presenting authors **Rachel McLay** and **Karen Foster**

Margaret Gibson (Co-Investigator, University of Waterloo), Neurodiversity Matters: An Ethnographic Investigation into Discourse, Practice, and Identity, CASWE, May 31

Eva Jewell (Co-Investigator, Toronto Metropolitan University) participated in a panel on Feminist Sociology and Publishing: Reflections on Work, Labour, and the Power of Knowledge Dissemination (organized by **Lisa Smith, Andrea Doucet**, and **Judith Taylor**), CSA, May 29. Eva spoke about her work as Research Director of the [Yellowhead Institute](#).

Umay Kader (PhD Student, University of British Columbia), Under the Same Roof: Experiences of Individuals Living with Parent(s), CSA, May 31

bridget livingstone (Research Associate, University of Waterloo), Leaving Places: Autistic People’s Perspectives on “Elopement”, CASWE, May 31

Kenya Thompson (PhD Student, York University), Enacting Feminist Epistemologies: Photovoice and Narrative Inquiry as Feminist Research Methods, CPSA, June 1

Kenya Thompson (PhD Student, York University), Prefigurative Care: Everyday Activism in Nova Scotia’s Childcare Deserts, CSA, June 2

Brianna Urquhart (MA Student, University of Waterloo) and **Margaret Gibson**, Beyond “Caregiver Burden”: Reimagining Care in Social Work Research, CASWE, June 2

Vanessa Watts (Co-Investigator and Steering Committee Member, McMaster University), There’s More Than One Way to Save Sociology: Research as Coalition-Building, keynote panel on Sociology at the Crossroads, CSA, May 31



It was wonderful to see so many faces at Congress!



A cross generational team: Kenya, Martha, Lindsey (in back), Andrea



Kenya Thompson



Martha Friendly



Andrea, Lindsey, Sophie, Jenn



Umay Kadar



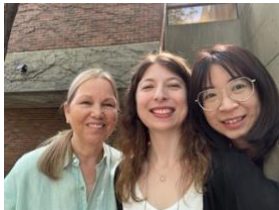
Umay and Andrea



Laura Fisher



Alyssa Gerhardt



Andrea, Umay, Manlin Cai



Sociology at the Crossroads Panel with Vanessa Watts



Sophie Mathieu and Jenn Turner



Andrea and Karen Foster



Some members of our steering committee met for dinner



Andrea, Lindsey McKay, Sophie

Partner-led Events

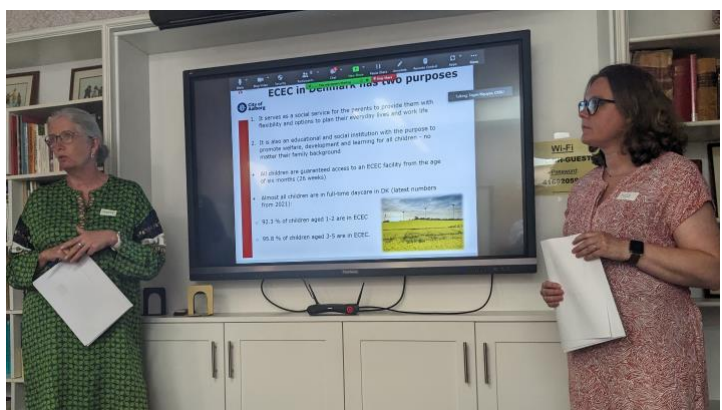
Our partners have been busy with events and we have participated in varied ways. We want to mention a few here:

CRRU: Learning Across Borders: What Can Canada Learn from Danish Early Childhood Education and Care?

On May 31st, 2023, with the leadership of **Martha Friendly**, [the Childcare Resource and Research Unit](#) hosted a group of child care community members to learn from a delegation of four Danish municipal child care officials. **Merete Villsen, Lars Falbe Hansen, Heidi Bak Nielsen, and Mia Waever** shared values, ideas, and possibilities from early childhood education in Denmark for building our early learning and child care system here in Canada. Learn more and watch the presentations [here](#).



Heidi and Lars



Merete and Mia

TAIBU Community Health Centre: Experiences and Needs of Young Black Canadian Mothers in Toronto

In collaboration with [TAIBU](#) Community Health Centre, **Sadie Goddard-Durant** (Research Associate and Adjunct Professor, Sociology, Brock University), **Andrea Doucet, Jane Ann Sieunarine** (community researcher) **Helena Tizaa** (student RA), **Kimberley Moore**, and **Princilia Bobwa** (TAIBU peer researchers) launched a report entitled [The Experiences and Needs of Young Black Caribbean-Canadian Mothers in Toronto](#) and held an event with key policy, program, and funding stakeholders at the BMO Learning Centre in Scarborough on June 12th. The event focused on the experiences of young Black mothers in navigating the challenges of motherhood while facing systemic racism, including maternal experiences of racism and gendered oppression, compounding stressors affecting Black mothers, and the impact of racism on early childhood growth and development. The report and event were based on a research project that took place in 2019-2020 with

TAIBU and is the first of its kind in Canada to explore this topic in a significant way. 50 people attended the event, including stakeholders from the Black community and health organizations, the YWCA, the City of Toronto, Ontario Association of Children’s Aid Societies, Ontario Trillium Foundation, Toronto District School Board, Toronto Public Health, and the Wellesley Institute.



Sadie Goddard-Durant and Andrea

Liben Gebremikael (Executive Director of TAIBU), Sadie, Andrea

Oxfam: How Much Do We Care?: An Assessment of the Canadian Paid and Unpaid Care Policy Landscape

Andrea participated in a panel discussion with **Lauren Ravon** ([Oxfam Canada](#)) and **Bilan Arte** ([Canadian Labour Congress](#)) in the Oxfam Report Launch Event at the National Arts Centre in Ottawa on June 13th. The report is based on Oxfam’s Care Policy Scorecard and focuses on actions at the federal level. The event was attended by researchers, advocates, and **Karina Gould**, Minister of Families, Children and Social Development and included a discussion on what’s needed and missing from Canada’s policies around care. You can read the full report [here](#).

Looking Ahead to 2024

We are planning some exciting team events for 2024 and will share more in our next newsletter later this year.



2. CURRENT PROJECTS

Child Care Comparative Project

Linda White (University of Toronto) and **Adrienne Davidson** (McMaster University) are working with two student RA's, **Marlene Terstiege** (University of Toronto) and **Michael Nolan** (McMaster University) on a cross-country child care comparative project. They are examining the varieties of child care finance and delivery in the federal systems of Australia, Canada, and Germany in order to explore the relationship between the existing policyscape and the mix of delivery agents that emerge with the infusion of federal financing. They are building an index of childcare finance and delivery agents *across* and *within* the three federal systems to trace the factors that affect observed policy pathways and outcomes. They will be presenting a paper on this at the XX ISA World Congress of Sociology in Melbourne, Australia, from June 25 – July 1, 2023.

Child Care Historical Project

Lisa Pasolli (Queen's University) is working with **Henry Stine** (MA Student, Dalhousie University) on the first stage of a project on the history of child care advocacy in BC, specifically with the groups that created the "\$10aDay" campaign. Together they are photographing and reviewing a privately-held archival collection at the Coalition of Child Care Advocates of BC. We will share further updates on this project as the second stage gets underway this Fall.



FamilyDemic International and National Survey

As reported in our last newsletter, in 2021, we participated in an international comparative survey which included national panels from Canada, US, Germany, Sweden, Poland, and Italy. The lead Investigator is **Anna Kurowska** (Poland). Our national survey with 4685 participants from Angus Reid's opt-in-online panel (the [Angus Reid Forum](#)) was led by **Sylvia Fuller** and **Andrea Doucet** and includes Canadian Co-I's: **Karen Foster, Donna Lero, Eva Jewell, Sophie Mathieu, Kim de Laat, and Melissa Milkie**. Student researchers are **Manlin (Monica) Cai, Siqi (Rebecca) Qin** and **Christina Treleaven** (UBC); **Alyssa Gerhardt** and **Rachel McLay** (Dalhousie).

We published our first international comparative paper entitled [Familydemic Cross Country and Gender Dataset on work and family outcomes during COVID-19 pandemic](#). There are several pieces from this survey in progress or under review in peer-reviewed journals and we presented several papers at Congress on the results of our analysis.

Care/Work Portrait Project: A Qualitative Research Study Exploring How Diverse Canadian Families Organize, Strategize, and Manage Paid and Unpaid Work

As a follow-up to the international Familydemic survey and our Canadian version of this survey, we developed a qualitative research study with a selected group of participants from our [Angus Reid](#) Panel. Between June 2022 – March 2023 we have interviewed (via Zoom) individuals and couples about their care and work lives with a view to understanding key contemporary issues and challenges for diverse Canadian families on paid and unpaid work. We interviewed a total of 155 participants (67 interviewed in couple interviews and 21 in individual interviews) living in 88 households across Canada.

Our study focuses on diverse families, including Indigenous, new immigrant and racialized, LGBTQ+, rural, low-income families, families with disabilities, and families with particular configurations of paid and unpaid work (i.e., one partner working in the care economy, and households where fathers took parenting leaves and/or flexible/remote work).

For our interviews, we developed a method and digital app, the Care/Work Portrait, to explore paid and unpaid work, and gender divisions and relations of household and care work. Interviews have been conducted by all team members, working in pairs. We have also conducted team data analysis sessions, using an adapted version of the Listening Guide data analysis approach.

Our research team of Co-investigators have worked with diverse populations and/or distinct case study foci:

- **Andrea Doucet** working across multiple sites
- **Janna Klostermann** (University of Calgary): “Double Duty” Care Workers
- **Kim de Laat** (University of Waterloo): Fathers, Remote Work, Parental Leave
- **Karen Foster** (Dalhousie University): Rural Families
- **Eva Jewell** (Toronto Metropolitan University): First Nations Families
- **Margaret (Meg) Gibson** and **bridget livingstone**, (University of Waterloo): 2SLGBTQ+ Families
- **Umay Kader** (University of British Columbia) and **Andrea Doucet**: New Immigrant Families
- **Karen Foster** and **Meg Gibson**: Families with Disabilities

Our strong student and research associate team includes: **Jenna Cooper, Jessica Falk, Laura Fisher, Umay Kader, Henry Stine, Kenya Thompson,** and **Brianna Urquhart.**

Our Project Manager is **Jennifer Turner.** Our Angus Reid team includes **Laura Joedicke, Krista Johnson,** and **Sal Rustom.**

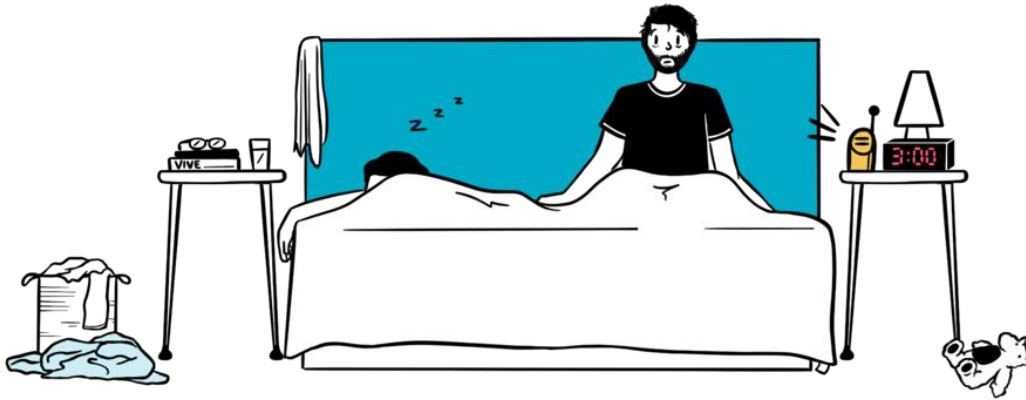
To date, we have published two peer reviewed articles that lay out the methodological and conceptual underpinnings of this project.

Doucet, A. and Klostermann, J. (2023) [What and How are we Measuring when we Research Gendered Divisions of Domestic Labour? Remaking the Household Portrait Method into a Care/Work Portrait.](#) *Sociological Research Online*. Online First

Doucet, A. (2023). [Care is Not a Tally Sheet: Rethinking the Field of Gender Divisions of Domestic Labour with Care-Centric Conceptual Narratives.](#) *Families, Relationships and Societies*, 12(1), 10-30.

Media Outputs Project

Our Media Outputs team (led by **Lindsey McKay, Marco Sasso,** and **Kenya Thompson**) are working on several media outputs, including edited versions of the [What's Next for Early Learning and Child Care?](#) webinars organized by [Childcare Now](#) and the [Childcare Resource and Research Unit](#). We will be uploading these soon and will report back in our next newsletter.



Parental Leave and International Network of Leave Policies and Research (LP&R)

As co- coordinator of this [international network](#), **Andrea** is connecting our Canadian research with international developments and foci in policies and research. The Network is holding its 20th anniversary Annual Seminar in Athens, Greece at the end of June. **Andrea, Sophie Mathieu, and Diane-Gabrielle Tremblay** are attending and presenting papers. We will share more from the Annual Seminar and our newest parental leave project in our next newsletter.

We have several other projects beginning this fall and are undertaking a planning retreat in September to plan more upcoming projects, collaborations, and events and will share more in our next newsletter.

3. PUBLICATIONS

Our team has published many research articles, book chapters and op eds on child care, parental leave, employment policies, and on theoretical and methodological innovations in research on care and work. You can find these [here](#) on our website. We just wanted to mention a few here:

The **Childcare Resource and Research Unit** has released the 13th edition of the Early Childhood Education and Care in Canada [report](#).

David Macdonald and **Martha Friendly** have released a report on [Canada's child care deserts](#).

Sophie Mathieu (The Vanier Institute of the Family) reviewed a half-century of parental benefits in Canada in the first of Vanier's new [Policy Brief Series](#).

An [article](#) led by Research Associate **Sadie Goddard-Durant** on young black mothers was added to the [Yale School of Public Health Women's History Month Public Reading list](#).

Sophie Mathieu, Diane-Gabrielle Tremblay, Christina Treleaven, and Sylvia Fuller have published an article in the Canadian Review of Sociology on [Determinants of work-family balance satisfaction during the pandemic: Insights from Québec](#).

Siqi Qin, Manlin Cai, Sylvia Fuller, and Yue Qian have published an article in Canadian Ethnic Studies on [Gender, Parenthood, and Employment During COVID-19: An Immigrant-Native Born Comparison in Canada](#).

Eva Jewell, Vanessa Watts, and Andrea Doucet have a book chapter in press entitled "Indigenous and Feminist Ecological Reflections on Feminist Care Ethics: Encounters of Care, Absence, Punctures, and Offerings" in the book *Decentering Epistemologies and Challenging Privilege: Critical Care Ethics Perspectives* (Rutgers University Press) edited by Sophie Bourgault, Maggie Fitzgerald, and Fiona Robinson. This chapter, written in three voices, evolved through a conversation that began with a conference presentation and then several online recorded discussions over several months. Thanks to **Jessica Falk** for assistance with facilitating this conversation.



4. TEAM NEWS

On June 14th, **Andrea** visited one of our partner organizations, the [Vanier Institute of the Family](#) and discussed event and project collaborations.



Andrea, Sophie, Margo Hilbrecht



Claire Jiang, Andrea, Nathan Battams

On May 26th, **Andrea** attended a day-long event at the University of Toronto honouring the work and legacies of Professor **Pat Armstrong**, a formidable leader in care research and policies. Other members of our larger team were also in attendance, including **Katherine Scott** ([CCPA](#)) who was one of the presenters on Pat's work, and **Janna Klostermann** (University of Calgary). Pat's leadership of the project Reimagining Long-Term Residential Care: An International Study of Promising Practices' (2011–19) was one of the inspirations for our RC/W Partnership project. In 2021, Andrea and Pat published a conversation about the book *Creative Teamwork: Developing Rapid Site- Switching Ethnography* (Armstrong and Lowndes, 2018). You can find that article [here](#).

In April our Steering Committee met with **Paul Kershaw** and **Andrea Long** from [Generation Squeeze](#) to explore possibilities for collaboration on research mobilization.

Welcome to our new students and research associates:

Elizabeth Adamson, Research Associate, University of New South Wales

Grace Caya, MA Student, University of Guelph

Leanna Katz, Research Associate & PhD Student, McGill University

Golda Lewin, Research Associate, University of British Columbia

Michael Nolan, MA Student, McMaster University

Marlene Terstiege, PhD Student, University of Toronto

You can learn more about these new team members and the rest of our team [here](#) on our website. We are thrilled to have so many outstanding new generation researchers as part of our team.

Congratulations to...

Jessica Falk, former student research assistant and now Research Associate, on the birth of her daughter, Hazel, born in February.

Martha Friendly was added to [Women of Impact in Canada](#), an online gallery dedicated to women's achievements, profiling those who have made an impact in politics, art, science and countless other fields.

Sadie Goddard-Durant, our former Postdoctoral Fellow and now Research Associate on her new job as Director, Office of Equity, Diversity and Inclusion at Durham College.

Sadie Goddard-Durant on the birth of her daughter, Daniella, born in June.

Susan Prentice was awarded the Queen Elizabeth II Platinum Jubilee medal; the Trailblazer Award (International Women's Day, University of Manitoba); and her Duff Roblin Professorship was just renewed for another three years.

Please visit our website and sign up for our newsletter to stay up to date on all of our activities!

If we have missed any significant achievements from our team, please let us know and we will include them in our next newsletter and on our website.

As a team prioritizing self-care, we plan to move at a slower pace this summer and so we may take a little longer to respond.

We wish you and your loved ones a happy summer!

[Subscribe to our newsletter](#)

[Check out the RC/W Website](#)