

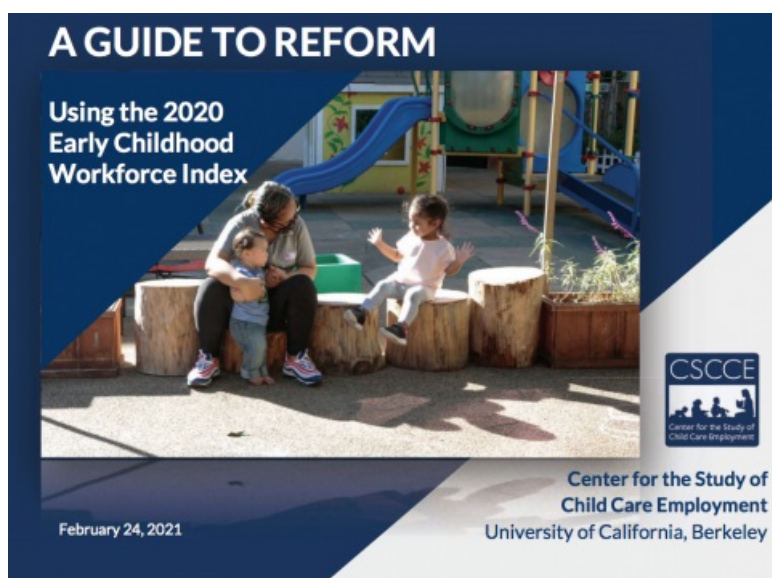
A guide to reform using the 2020 Early Childhood Workforce Index ^[1]

24 Feb 2021 - 9:00am

Event Website: [Center for the Study of Child Care Employment](#) ^[2]

Region: [United States](#) ^[3]

Details



Watch webinar online ^[2] [53:12] ^[5]

Access webinar slides [PDF] ^[6]

During this global pandemic, child care has been recognized as essential, yet most states have failed to enact policies to support and early educators themselves. Reform is needed now more than ever.

Join the Center for the Study of Child Care Employment and guest speakers to learn how to use the new 2020 Early Childhood Workforce Index. Take action to improve working conditions for early educators and strengthen our early care and education system for children and families.

Presenters

- Kyra Swenson, Infant/toddler Teacher & Co-founder of Wisconsin Early Childhood Action Needed
- Jen Horwitz, Policy & Research Director, Vermont Let's Grow Kids
- Dr. Lea Austin, Executive Director, Center for the Study of Child Care Employment
- Dr. Caitlin McLean, Senior Research Specialist, Center for the Study of Child Care Employment
- Krista Olson, Research & Policy Associate, Center for the Study of Child Care Employment

What is the Index?

Coming February 23, 2021 - The 2020 Early Childhood Workforce Index provides a data-rich look at state-based policies and conditions for the early care and education workforce.

This third edition contains:

Individual state profiles;

- An interactive U.S. map and detailed tables on wages, state workforce policies, and initiatives;
- Spotlights on state responses to the COVID-19 pandemic;
- Policy recommendations on how to bolster the safety and livelihoods of early educators during the COVID-19 pandemic and beyond; and
- An advocacy toolkit with policy guidelines and framing language.

Tags: child care workforce [7]

Source URL (modified on 5 Mar 2021): <https://childcarecanada.org/resources/events/21/02/guide-reform-using-2020-early-childhood-workforce-index>
Links

[1] <https://childcarecanada.org/resources/events/21/02/guide-reform-using-2020-early-childhood-workforce-index>

[2] <https://cscce.berkeley.edu/workforce-index-2020/2021/03/03/a-guide-to-reform-using-the-2020-early-childhood-workforce-index/>

[3] <https://childcarecanada.org/taxonomy/term/7865>

[4] <https://childcarecanada.org/cscce.berkeley.edu/workforce-index-2020/2021/03/03/a-guide-to-reform-using-the-2020-early-childhood-workforce-index>

[5] <http://cscce.berkeley.edu/workforce-index-2020/2021/03/03/a-guide-to-reform-using-the-2020-early-childhood-workforce-index/>

[6] <https://cscce.berkeley.edu/workforce-index-2020/wp-content/uploads/sites/2/2021/03/2020-Index-Guide-to-Reform-Slides.pdf>

[7] <https://childcarecanada.org/category/tags/child-care-workforce>