

Early childhood educator challenges ^[1]

Author: Qinn, Stephen

Source: CBC Radio - The Early Edition

Format: Video

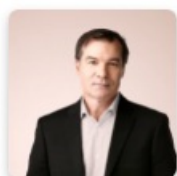
Publication Date: 20 Jan 2022

AVAILABILITY

Listen online [6:44] ^[2]

EXCERPTS

The Early Edition with Stephen Quinn



Early childhood educator challenges

^[2]



Play Segment

6:44



Early childhood educators say workers are leaving the field en masse as burnout continues to plague the sector. We hear from the Chair of the School of Education and Childhood Studies at Capilano University.

Region: British Columbia ^[3]

Tags: child care workforce ^[4]

COVID-19 ^[5]

wages and working conditions ^[6]

Source URL (modified on 26 Jan 2022): <https://childcarecanada.org/documents/child-care-news/22/01/early-childhood-educator-challenges>

Links

[1] <https://childcarecanada.org/documents/child-care-news/22/01/early-childhood-educator-challenges> [2] <https://www.cbc.ca/listen/live-radio/1-91-the-early-edition/clip/15890267-early-childhood-educator-challenges> [3] <https://childcarecanada.org/taxonomy/term/7860> [4]

<https://childcarecanada.org/category/tags/child-care-workforce> [5] <https://childcarecanada.org/taxonomy/term/9040> [6]

<https://childcarecanada.org/taxonomy/term/9175>